



# JAPAN FLOODING

Emergency Response  
January 2019

In July 2018, western Japan endured the worst floods the country has seen in nearly 40 years.

With your support, we reached

## 1,000 PEOPLE

with relief and recovery services following the severe flooding in Japan.



## 225 DEATHS

 across  

## 15 PREFECTURES



## 9,500

houses damaged or destroyed

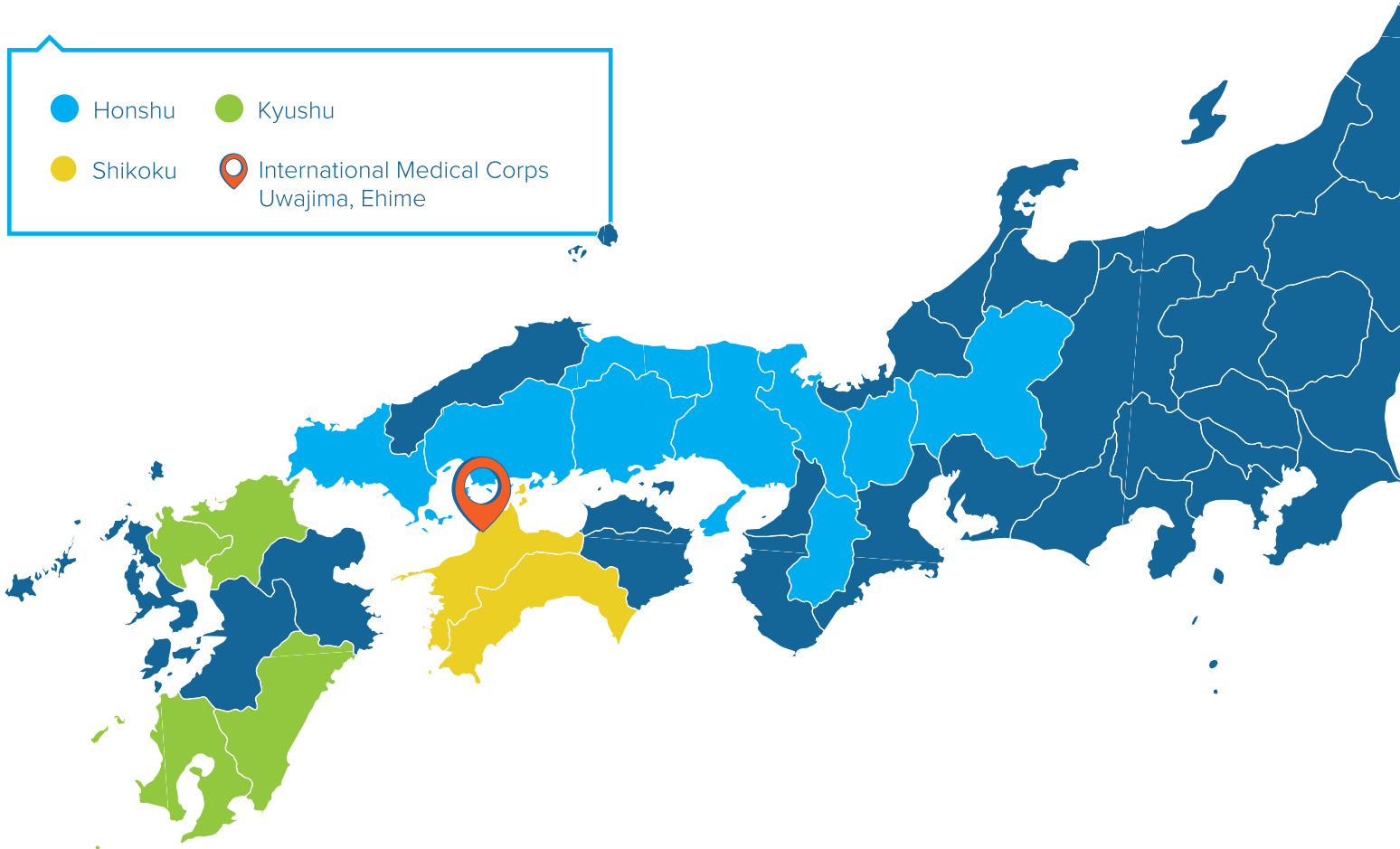


## 22,000+

hospitalized as temperatures also soared

## AREAS AFFECTED BY FLOODING

- Honshu
- Kyushu
- Shikoku
-  International Medical Corps Uwajima, Ehime





“International Medical Corps was one of the first responders in Ehime Prefecture. We addressed the unmet needs of the aged as well as children displaced from their homes.”

**TAKESHI KOBAYASHI**  
Team Lead and Country Representative Japan

**58** Homes supported with cleaning, rehabilitation, and supplies



**100** Mattresses Delivered

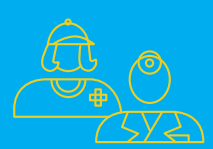


**4** Evacuation centers reached



**700** Children and older populations reached with safe and friendly spaces

**MOVING FORWARD** >>>>>>>>>>



Building disaster preparedness and readiness capacity with local teams in Uwajima

Thank You to Our Supporters



**HEADQUARTERS**  
12400 Wilshire Blvd. Suite 1500  
Los Angeles, CA 90025  
**PHONE:** 310-826-7800  
**FAX:** 310-442-6622

**WASHINGTON DC OFFICE**  
1313 L St. NW, Suite 110  
Washington, DC 20005  
**PHONE:** 202-828-5155  
**FAX:** 202-828-5156